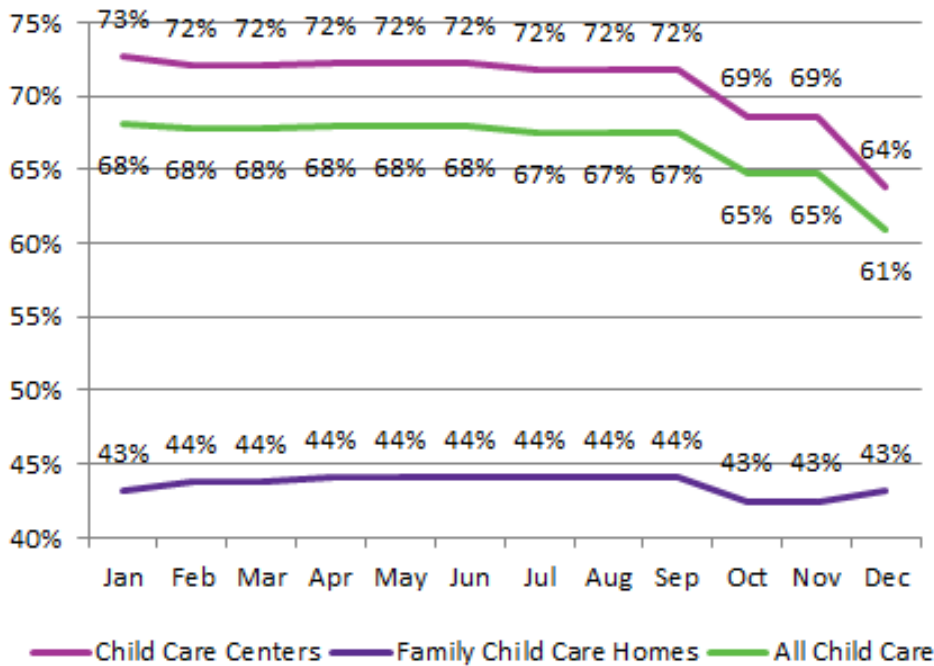


COVID-19: IMPACTS ON CHILD CARE IN CHATHAM

**2020 Child Care Enrollment in
Chatham County**



Source: NC DCDEE Monthly Child Care Statistical Report

**CHILD CARE ENROLLMENT
DURING THE PANDEMIC**

While enrollment in Family Child Care Homes has remained stable over the pandemic, enrollment in Centers has dropped 9% since January 2020.

There are several possible explanations for decline in Child Care Center enrollment since September, including the rise in the unemployment rates (particularly for women) and delayed stimulus support.

Important to note is that the swift drop in enrollment from September to December could be linked to the timing of DCDEE's pandemic response. DCDEE made subsidy payments to providers based on February enrollment through the month of August, and may have recorded enrollment data based on subsidy payments rather than actual enrollment numbers.

Closures, Quarantines, and Clusters

19

unique facilities have had to close either a classroom or the whole facility for at least 14 days due to a positive case at least once during the pandemic.

3

facilities closed early in the pandemic during the emergency stay at home order as a precaution. One center has remained closed.

0

As of 2/10/2021 there have been no clusters* of COVID-19 cases at any Chatham child care program.

*In a child care or school setting, a COVID-19 cluster is defined as a minimum of five confirmed diagnostic cases with illness onsets or initial positive results within a 14-day period and plausible epidemiologic linkage between cases.

COVID-19 SUPPORTS FOR CHATHAM COUNTY CHILD CARE PROVIDERS

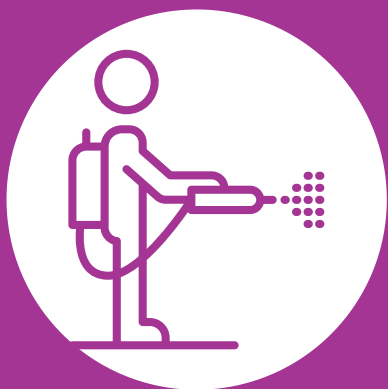


Chatham County Child Care Health Consultant Dorothy Rawleigh has provided individualized technical assistance for 25 child care programs during FY 20-21 due to a positive COVID-19 case or a close contact at the child care program.

As of February 10, 2021, she has also provided 4 informational training sessions on the COVID-19 vaccine to 34 child care professionals, with more planned in later months.

Chatham County Partnership for Children purchased and distributed more than 1,000 reusable child-sized masks to child care providers in the Fall of 2020.

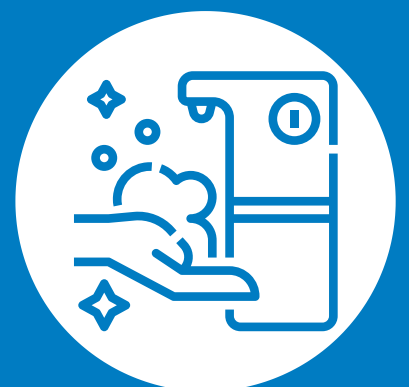
As of February, the Partnership has purchased 3,000 additional disposable masks (based on feedback from providers indicating disposable masks are preferred) to distribute to child care providers who are running low.



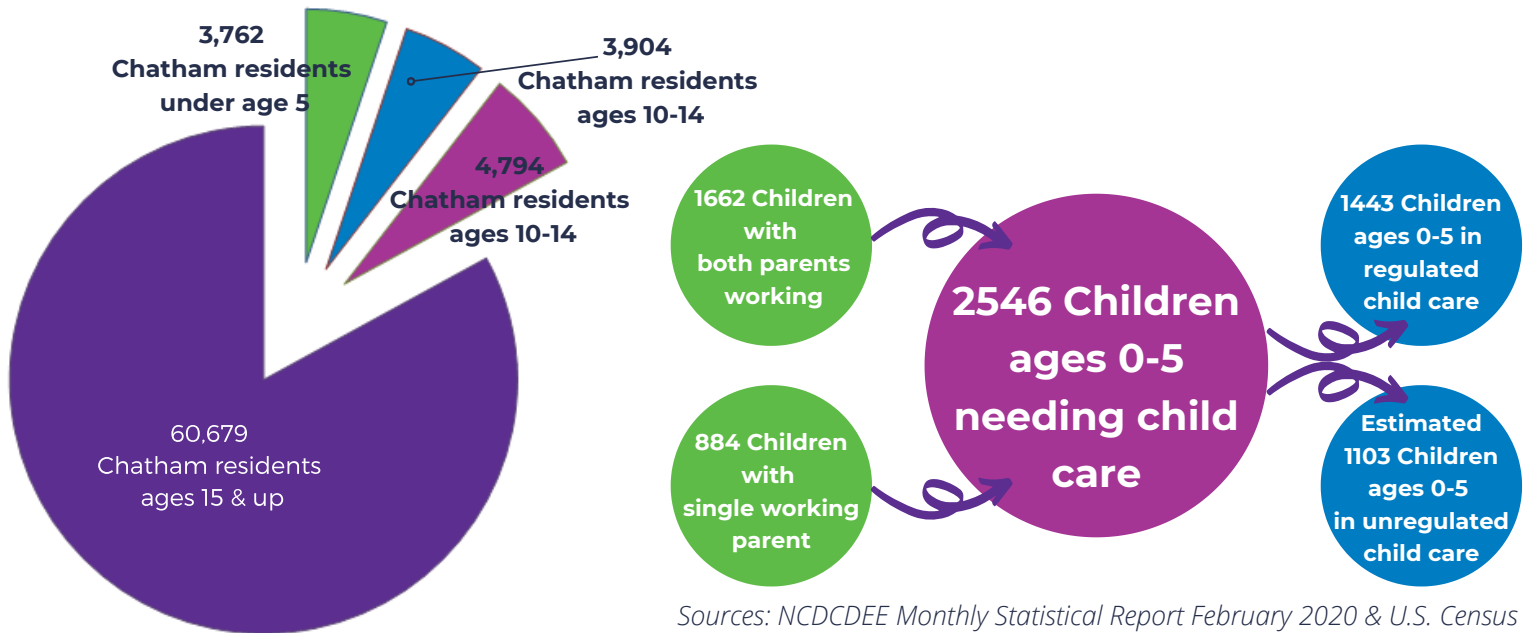
The Partnership purchased 14 electrostatic sprayers with disinfecting and sanitizing solution for use by the child care community in Chatham. Eleven sprayers were distributed to child care facilities and the remaining 3 are available for loan in case a facility needs a sprayer to disinfect after an exposure. Seventeen Child Care Centers, plus Head Start, and 11 Family Child Care Homes have signed agreements to use sprayers.

The Partnership distributed 30 hands-free soap dispensers to child care facilities in Chatham to reduce the spread of illness related to children handling manual soap pumps.

Ten CO2 monitors were also distributed to programs located in older buildings where poor air quality increases risk of airborne illness spread. Providers were connected with environmental health inspectors for support reading monitor outputs.

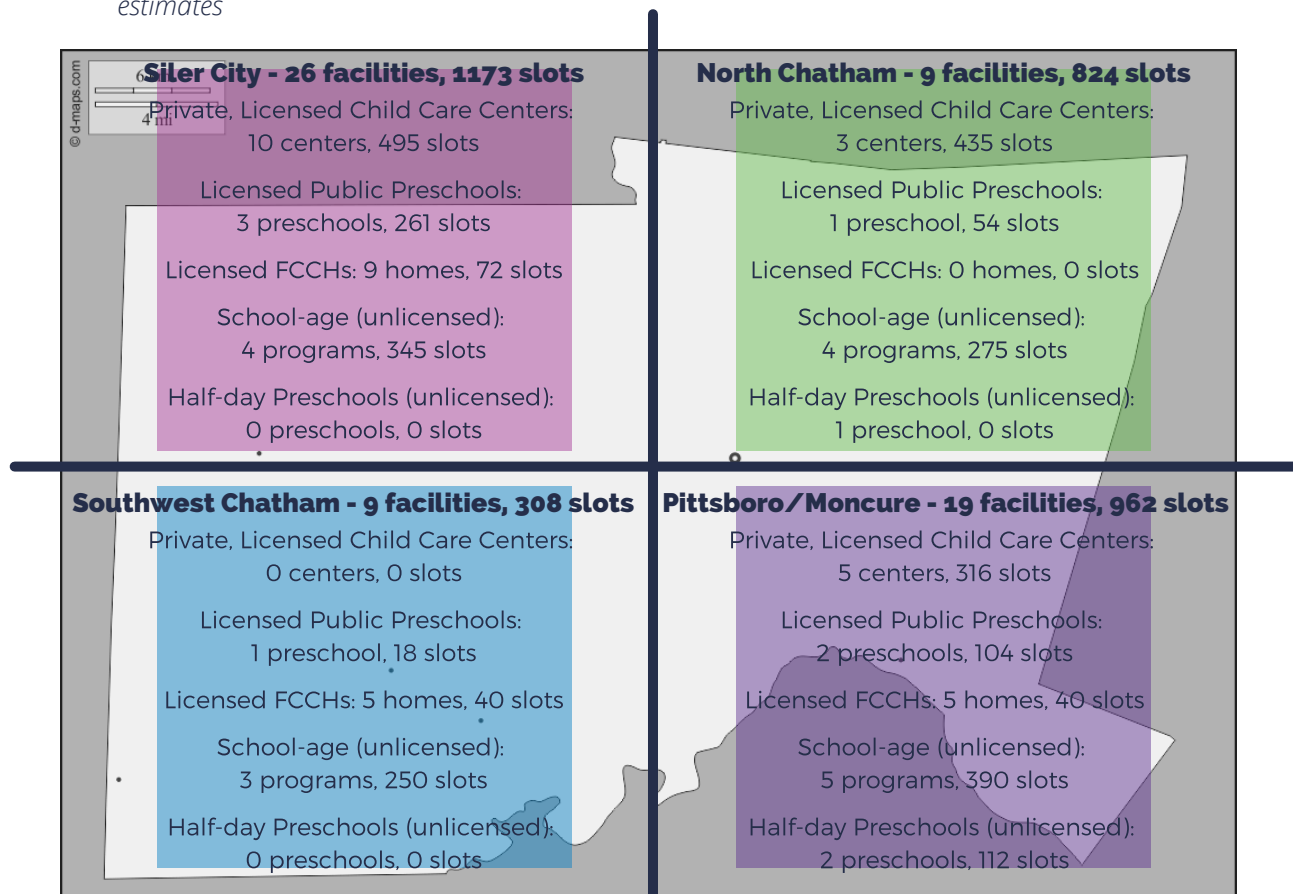


CHILD CARE SUPPLY AND DEMAND: HOW MANY CHILDREN NEED CARE, AND WHAT IS AVAILABLE?



Source: U.S. Census Bureau, 2018: ACS 1-year estimates

Sources: NCDCEE Monthly Statistical Report February 2020 & U.S. Census Bureau, 2018 5-Year American Community Survey



Source Work Life Systems database January 2021, Chatham County Partnership for Children

CHILD CARE SUPPLY AND DEMAND: HOW ACCESSIBLE IS CHILD CARE IN CHATHAM?

CHILD CARE IN CHATHAM

Cost, Availability, and Accessibility

IN 2020...

\$8,613

was the average annual cost of childcare for one child in Chatham County. This represents 14% of the median income in the county, and 57% of a minimum wage income.

ANNUAL COST



AVAILABLE 3,216 SLOTS



daytime slots were available across Chatham County in 45 licensed public Preschools, private Child Care Centers, and Family Child Care Homes, as well as 19 unlicensed Half-day Preschools and School-age programs.

979

5-STAR SLOTS

daytime slots were available at 5-star licensed facilities. There were also 292 slots at 4-star licensed facilities; 40 at 3-star; 278 at 1-star; and 59 in religious programs.



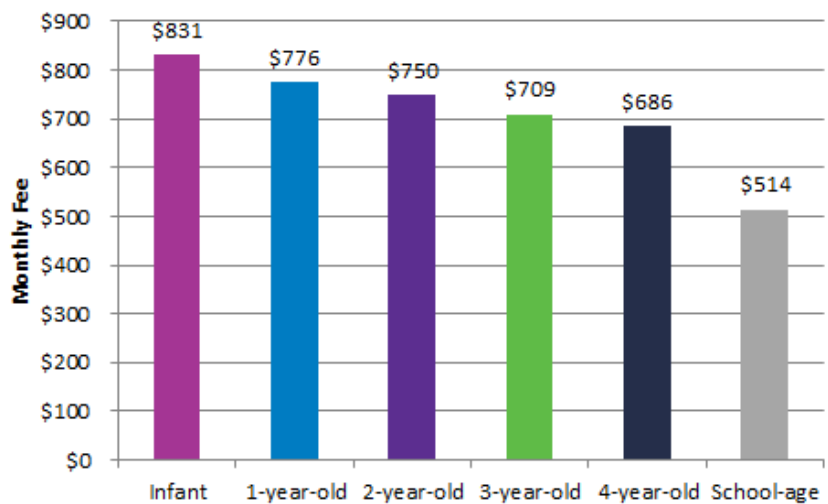
PERCENT IN 4- AND 5-STAR



73%

of children enrolled in regulated child care in 2018-2019 in Chatham County were enrolled in 4- and 5-star programs, increased from 23% in 2002.

Average Cost of Full-time Child Care by Age Group



Source: Work Life Systems database January 2020 (fees reported to Chatham County Partnership for Children by child care providers for referral database)

Number of Licensed Child Care Programs Offering Special Services

	Pittsboro/Moncre	Siler City	Southwest Chatham	North Chatham
Weekend Child Care	0	3	0	0
2nd Shift Child Care	2	7	1	0
3rd Shift Child Care	2	6	1	0

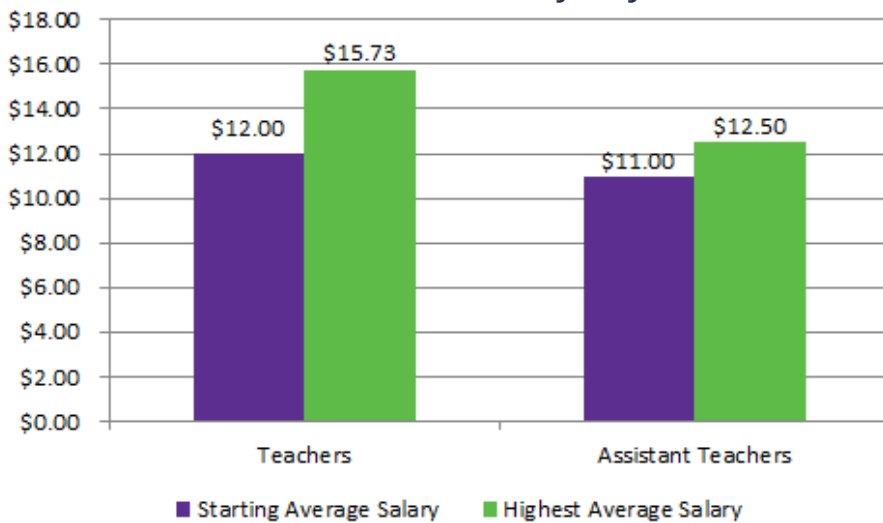
Source Work Life Systems database January 2021, Chatham County Partnership for Children

CHATHAM COUNTY CHILD CARE WORKFORCE

In 2019, Child Care Services Association conducted a statewide [Early Childhood Workforce Study](#), funded by the DCDEE. As a part of that study, data was collected from Chatham County about our child care workforce. Below are some key highlights from Chatham County taken from CCSA's 2019 report.

Teacher Compensation

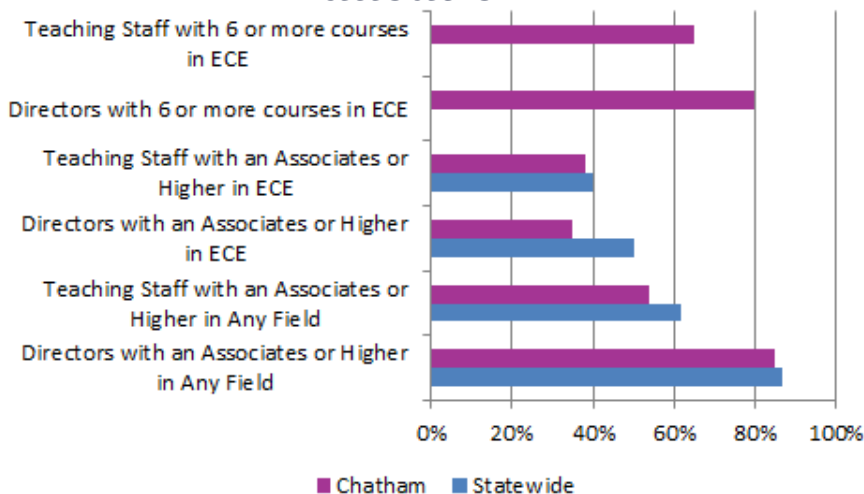
Teachers' Hourly Pay



- 50% of centers provided fully or partially paid health insurance.
- Paid leave: 74% of centers provided sick leave, 85% vacation leave, and 100% holiday leave
- 37% of centers provided disability, 68% provided parental leave, and 53% provided retirement.

Child Care Workforce

Education



Child Care Workforce

Demographics

- Median director age: 42 years old.
- Median teaching staff age: 33 years old.
- 100% of directors and 100% of teaching staff were female.
- 35% of directors and 49% of the teaching staff were people of color.
- 10% of directors and 16% of the teaching staff were Hispanic/Latinx.
- 22% of the teaching staff had no health insurance from any source.
- 37% of the teaching staff received public assistance in the prior 3 years.

Experience and Turnover

Teaching staff had been in their programs for an average of 2 years and in the Early Childhood Education field for an average of 8.7 years at the time of the study. Over the prior 12 months, 24% of full time teaching staff in Chatham left their early care and education program. Approximately 20% of Chatham's teaching staff plan to leave the field in the next three years.



Landscape of Child Care in Chatham County

FEBRUARY 2021

ABOUT

CHATHAM COUNTY PARTNERSHIP FOR CHILDREN

Chatham County Partnership for Children is a non-profit organization serving Chatham and surrounding counties.

The Partnership staff, board of directors, and community partners work together to promote opportunities for all our young children to grow up safe, healthy, and able to succeed.

The Partnership is home to the following programs:

- **Smart Start**
- **Child Care Resource & Referral**
- **NC Pre-K**
- **The Child and Adult Care Food Program**
- **Kaleidoscope Play and Learn Group**
- **Dolly Parton's Imagination Library**

If you have questions about this Landscape of Child Care Report, please contact Program Director Elizabeth Anderson at elizabeth@chathamkids.org.

You can reach our Executive Director, Genevieve Megginson, at genevieve@chathamkids.org.

**For more information about the Partnership,
please visit our website at www.chathamkids.org or
find us on FaceBook @chathamcountypartnershipforchildren**